

# XLERATOR® HAND DRYER GREEN CERTIFICATIONS



THE NEW STANDARD FOR COMMERCIAL FACILITIES

## LEED® (Leadership in Energy & Environmental Design)

In March 2000, the U.S. Green Building Council formally released the LEED Green Building Rating System. Today, hundreds of public and private building projects in the United States and abroad use LEED as the standard for green building specifications. **XLERATOR® HAND DRYER** helps facilities qualify for LEED Credits in several areas:



### Applicable LEED Credits (2009 Rating Systems)

- EA (Earth & Atmosphere) Credit 1 - Optimizing Energy Performance (Now a mandatory credit for all LEED facilities)
- MR Credit 6 Solid Waste Management - Waste Stream Audit
- IEQ Credit 3.1 Green Cleaning - High Performance Cleaning Program
- IO Credit 1 Innovation in Operations
- IO Credit 3 Documenting Sustainable Building Cost Impacts

*The Leadership in Energy and Environmental Design (LEED®) Green Building Rating System™ is a/the nationally accepted benchmark for the design, construction, and operations of high performance green buildings. LEED was developed by the U.S. Green Building Council (USGBC), a nonprofit working to transform the building industry to sustainable practices.*

## Environmental Building News – GreenSpec®

The leading newsletter on environmentally responsible design and construction since 1992, EBN is independently published and advertisement free.



The research and reporting is uncompromised by corporate or industry sponsorships. EBN researchers independently tested **XLERATOR** for its performance and energy efficiency and determined that **XLERATOR** clearly outperforms conventional electric hand dryers, both in energy savings and dry time, which is why **XLERATOR** was the first hand dryer to be GreenSpec Listed.

- Voted Top Ten Product of 2002 by the editors of EBN

**GreenSpec** - is a database of green products, specifications and practices for use by architects and construction professionals. This database includes over 2,100 green building products carefully screened by the editors of Environmental Building News, organized according to the 16-division CSI MasterFormat™ system. The **XLERATOR** is listed in Division 10 28 00.

## Green Building Initiative

Excel Dryer is a proud registered supporter of the Green Building Initiative. The mission of the Green Building Initiative is to accelerate the adoption of building practices that result in energy-efficient, healthier and environmentally sustainable buildings by promoting credible and practical green building approaches for residential and commercial construction.



AVAILABLE FROM

**SSS® TRIPLE S**  
**NATIONWIDE**  
**SANITARY SOLUTIONS**  
1 - 8 0 0 - 3 2 3 - 2 2 5 1  
www.triple-s.com

## Sustainable Buildings Industry Council

Excel Dryer is a member of the Sustainable Buildings Industry Council. Since its inception in 1980, SBIC has been a national leader in defining the whole-building approach to design, which results in high performance buildings and favors sustainability as a prominent design objective. SBIC members and partners share the common goal of delivering buildings that provide long-term value and performance, reduce operating costs, keep occupants safe, comfortable and healthy, and protect the natural environment.



## Green Restaurant Association

The **XLERATOR** is the only hand dryer endorsed by the GRA as the best environmental solution in the hand dryer category for the restaurant industry.



## Green Hotels Association

Excel Dryer is an Ally Member and approved vendor of the Green Hotels Association. **XLERATOR** is the recommended hand dryer for green hotels.

## Oikos Product Directory

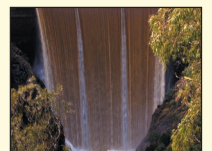
The most comprehensive listing of products and services for energy-efficient, environmentally-responsible building construction. **XLERATOR** hand dryers are listed in the directory. [www.oikos.com](http://www.oikos.com).

## GOOD FOR THE ENVIRONMENT

### Do you know the facts?



Seventeen trees are consumed to make one ton of paper.



One ton of paper production pollutes 20,000 gallons of water.



One ton of paper consumes three cubic yards of landfill.

Average cost of paper is 2 cents per hand dry using paper towels vs. 1/10th of a cent using hand dryers.

