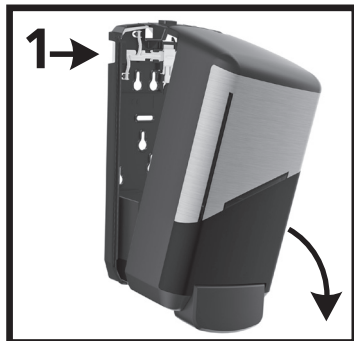


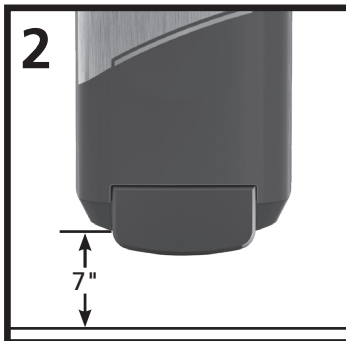
# Manual Push Style Dispenser Installation and Use Instructions

Please read all instructions carefully before installing and using the dispenser.

## Dispenser Installation

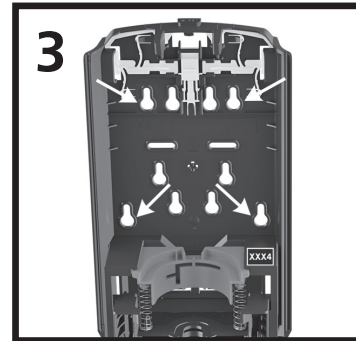


Open dispenser by pressing release buttons on the side and allow the front cover to descend forward.



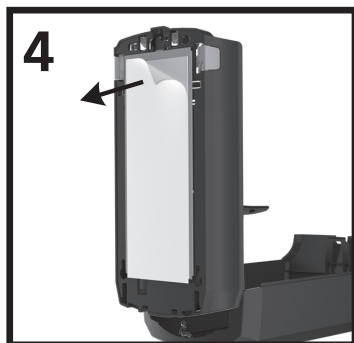
Install dispenser with at least 7" free space above counter top to allow routine service.

### *If installing with wall fasteners*

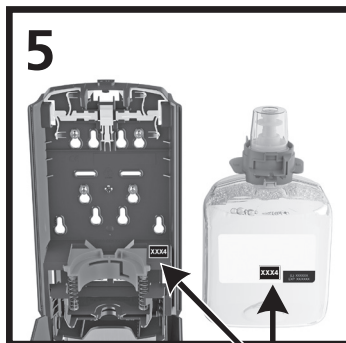


Using the dispenser, pierce the tape on the back plate to mark and drill four holes using 1/4" drill bit. Use four #10 x 1" wall anchors and four #10 x 1" screws to secure the dispenser in place, being careful not to over tighten. It is recommended to use 4 screws. If only two are possible, the top two holes should be used. **Recommended holes shown.**

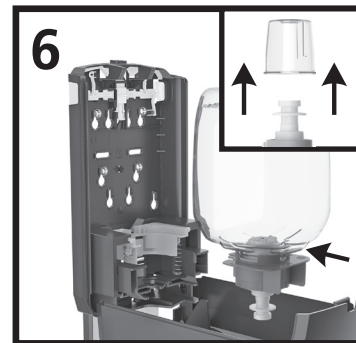
### *If installing with tape*



Clean installation surface with an alcohol pad. Allow surface to dry for 60 seconds then peel paper off installation tape and press the dispenser firmly against the wall for 10 seconds. For maximum adhesion, wait 24 hours before loading refill or using dispenser.



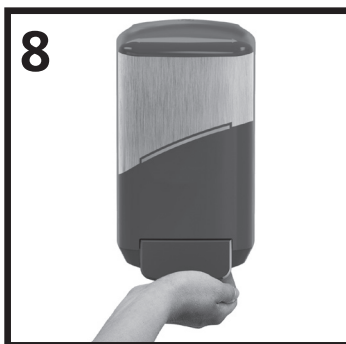
Match label on refill with label on dispenser.



Remove refill cap and push the new refill into dispenser.



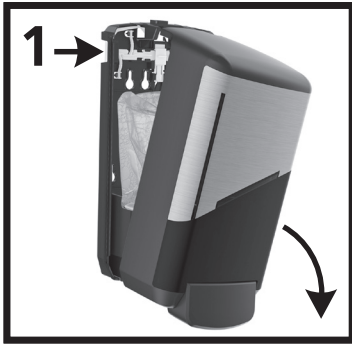
Close dispenser cover.



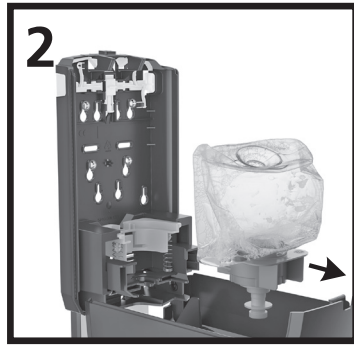
Place hand in middle of bar and push multiple times to prime refill. Product will dispense as bar is depressed.



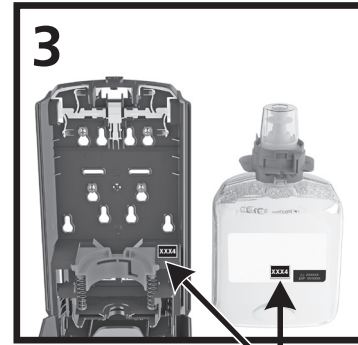
## Refill Replenishment



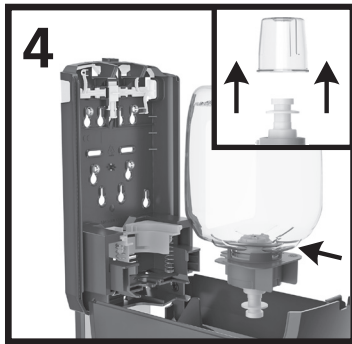
Open dispenser by pressing release buttons on the side and allow the front cover to descend forward.



Remove empty refill.



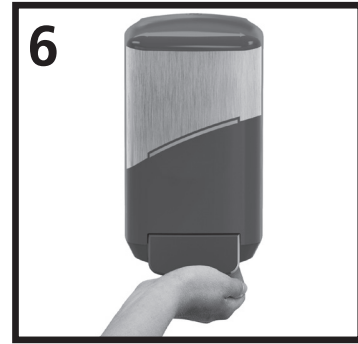
Match label on refill with label on dispenser.



Remove refill cap and push the new refill into dispenser.



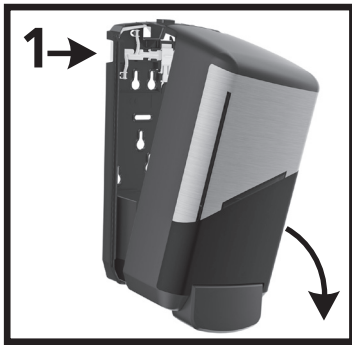
Close dispenser cover.



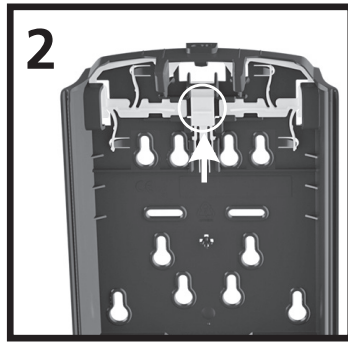
Place hand in middle of bar and push multiple times to prime refill. Product will dispense as bar is depressed.



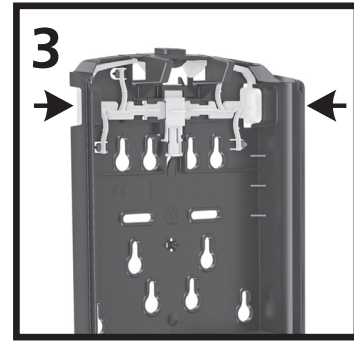
## Locking the dispenser with LOCK OR NOT™ Technology



Open dispenser by pressing release buttons on the side and allow the front cover to descend forward.

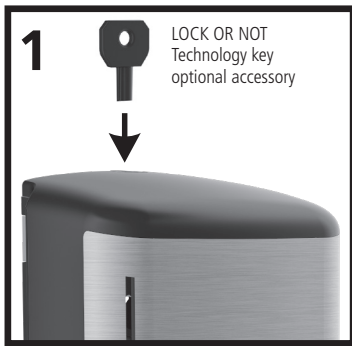


Slide locking mechanism upward until a click is heard.  
**Dispenser is locked.**

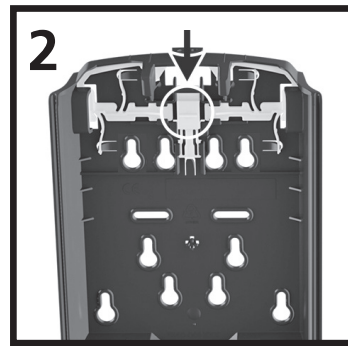


Check for a successful lock by pressing buttons on sides of the dispenser.

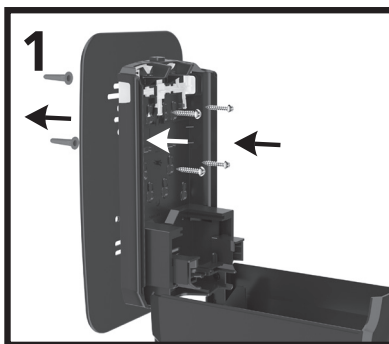
## Disabling the Locking Mechanism



Insert key in top of dispenser to release front cover.



Push locking mechanism downward to unlock dispenser.  
**Dispenser is unlocked.**



Install the TRUE FIT wall plate at the designated anchor holes. Place the TRUE FIT wall plate between the dispenser and the wall during installation.

### TRUE FIT™ Wall Plate Installation

The TRUE FIT Wall Plate is an optional accessories that can be utilized with the dispensing systems.

Use the TRUE FIT Wall Plate to cover any wall damage from removing old dispensers.

7740-BLK-18  
*TRUE FIT Wall Plate - Black*



7740-WHT-18  
*TRUE FIT Wall Plate - White*

