

PRO SERIES

ALLEY OOP

MULTI-ENZYME DIGESTANT & SPOTTER

MULTI-ENZYME DIGESTIVO Y OBSERVADOR DE TIRO

Technical Data

Areas of Use

- Carpets
- Toilets
- Grease Traps
- Laundry Pre-Spot
- Septic Tanks
- Portable Toilets

Specifications

SSS Item Numbers	48098, 48099
Available Sizes	1Qt. & 1G
Physical State	Liquid
Color.....	White emulsion
Fragrance	Bubble gum
pH	7.0 - 8.0
Bacterial Count	Over 100 billion per gal.
Fumes	None
Viscosity	Water thin
Effective Temperature Range	50o - 120oF
Acid Content	None
Caustic Content	None
Phosphate Content	None
Solubility	Complete with water
Flash Point	None
Biodegradability	Complete
Storage/Stability	2 years
Weight Per Gallon	8.33 lbs./gal.
Freeze/Thaw Stability	Keep from freezing

HMIS Hazardous Materials I.D. System

Health	1
Flammability	0
Reactivity	0
Personal Protection	B

What the Pros Know

Can be used as a laundry pre-spotter. Simply spray soils and stains before washing.

Description

A concentrated suspension of bacterial spores designed for high enzyme production to digest and liquefy solid waste. Enzymes such as amylase, protease, lipase, and cellulase are produced and regenerated by this product, thus multiplying the product's effectiveness. These enzymes degrade starch, carbohydrates, protein, grease, fats, and cellulose. Safe to use and handle with a pleasant odor. Excellent for spotting stains on all fabrics, toilet bowls and restroom surfaces, grease traps and drains, sewage plants, sumps, septic tanks, and portable toilets.

Directions

Wear safety equipment recommended on MSDS, place Wet Floor Signs and read all directions and cautions prior to beginning your work.



GENERAL DEODORIZING: Spray product directly onto the cause of the odor. In restrooms, spray directly into bowl, then flush. Spray surrounding surfaces to deodorize.

LAUNDRY PRE-SPOTTER: Spray soils and stains with product before washing.

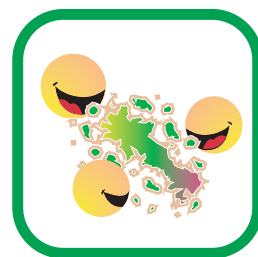
GREASE TRAPS: Pour 5-10 ounces of product down drain closest to grease trap daily. It is best to apply product when drain will not be used for a period of time such as over night.

DRAIN LINES: Use 4-6 ounces twice a week to keep drain lines clear.

SEPTIC TANKS: Add 1 quart for initial treatment. Use 6 ounces per week thereafter by flushing down toilets.

PORTABLE TOILETS: Add 1 gallon directly into toilet and cover solids with water. Repeat every time toilet is emptied.

NOTE: Do not use with disinfectants, hot water or chlorine bleaches.



Safe to Use and Handle

Excellent for Spotting Stains

Over 100 Billion Bacterial Count per Gallon

